



## M4com

### Residential Diaphragm Gas Meter

Its compact design makes M4Com the right choice where a precise and reliable measurement for medium flow rates is required.

M4Com meets MID standard (certificate delivered by LNE) and is compliant with EN1359, OIML.

#### METROLOGY

M4Com stands out with its metrological superiority. During preliminary test bench controls, the meter is 100% tested according to customer or national requirements.

In order to meet the highest demand in international markets, the design and the careful material selection of the M4Com provide accuracy and long term stability.

During the preliminary test controls on the sonic nozzle test benches, all meters are tested at  $Q_{min}$ ,  $0.2 Q_{max}$  and  $Q_{max}$ .

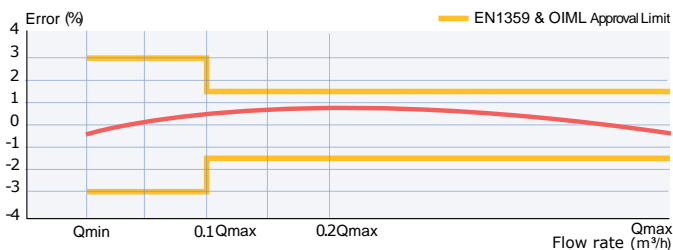
#### QUALITY ASSURANCE

Quality assurance procedures based on ISO 9001, ISO 14001 and strict controls throughout the manufacturing process ensure a very high quality level and reliable product in compliance with environmental standards.

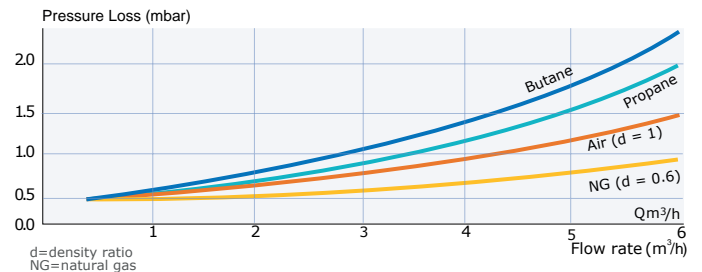
#### TECHNICAL SPECIFICATIONS

<b>Gas Type</b>	Natural Gas, LPG and all non-corrosive gases, <b>hydrogen blended</b>
<b>Cyclic Volume</b>	1.2 dm <sup>3</sup>
<b>Temperature Range</b>	Operating :-25°C to +55°C Storage :-30°C to +70°C
<b>Meter Dimensions</b>	G1.6 / G2.5 / G4
<b>Maximum Operating Pressure</b>	0.5 bar
<b>Measuring Range</b>	G1.6 $Q_{min}$ : 0.016 m <sup>3</sup> /h $Q_{max}$ : 2.5 m <sup>3</sup> /h G2.5 $Q_{min}$ : 0.025 m <sup>3</sup> /h $Q_{max}$ : 4 m <sup>3</sup> /h G4 $Q_{min}$ : 0.04 m <sup>3</sup> /h $Q_{max}$ : 6 m <sup>3</sup> /h
<b>Numarator Display</b>	Mechanical Index 8 Drums (3 decimals) =(99999,999)
<b>Casing</b>	Sheet Steel
<b>Accuracy</b>	Class 1.5
<b>Approval</b>	MID (2014/32/EU) module B & module D No: LNE-38915
<b>Totalizer IP Class</b>	IP54
<b>Connections</b>	2 pipe connection
<b>Colour</b>	Grey White RAL9002

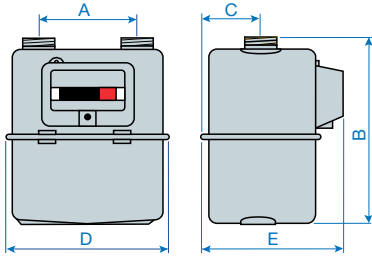
#### ACCURACY CURVE



#### PRESSURE LOSS CURVE



## Dimensions and Weight



M4com

Casing Material	A mm	B mm	C mm	D mm	E mm		Weight kg		Connection Threads (according to ISO 228-1)
					"c" series	"o" series	"c" series	"o" series	
Steel	110	219 ±9*	67	190	173.7	156	1.55	1.45	DN 20 - G 1 ¼"

\* Depending on the connection height  
Please consult us for any other requests.

## TOTALIZER FEATURES

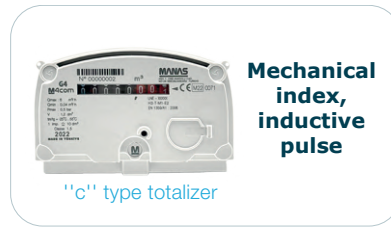
### "c" Series

- Smart ready, allowing for future AMR capabilities
- New generation Pulse technology
- Immune to magnetic tampering
- Compatible with different communication technologies
- Laser marking
- Enhanced structure against physical tampering
- Pulse: 0.01 m<sup>3</sup>, Pulse System: Cyble™ target

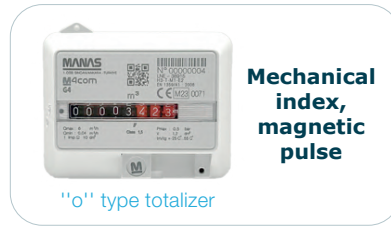
### "o" Series

- LF pulse transmitter (ready for transmission via standard reed switch)
- Compliant with traditional applications
- Enhanced structure against physical tampering
- Laser marking
- Pulse: 0.01 m<sup>3</sup>, Pulse System: Retrofittable LF system, 12 Vdc max-10 mA max.

## Building Blocks of M4Com "c" & "o" series



+ Aircom NB-IoT  
Aircom GPRS  
Aircom LoRa



+ Pulse Transmitter

## Ordering Information

- » Measuring range (G1.6, G2.5 and G4)
- » Meter connection axis distance and connection type
- » Totalizer Type ("c" series, "o" series)
- » Special Marking
- » Options (Test Nipple, wired/wireless communication modules, Smart Tag)

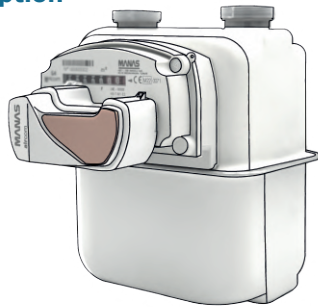


M4Com "c" series



M4Com "o" series

## Aircom Option



- » Aircom NB-IoT
- » Aircom GPRS
- » Aircom LoRa
- » Aircom Pulse\*

\* Aircom Pulse is designed to convert M4Com's "c" series totalizer into an LF/HF pulse sensor via a cable. Please consult MANAS for more information.

## Smart Tag Option (RFID)



MANAS-BROCHURE-2 PAGES V01-16/06/23

## Manas Enerji Yönetimi Sanayi ve Ticaret A.Ş.

ASO.1. Organize Sanayi Bölgesi Anadolu Caddesi No:25 SINCAN/ANKARA/TÜRKİYE

mail: export@manas.com.tr

For futher info  
manas.com.tr

